

Installation Guide
Déjà Vu X2

déjàvu 

Copyright © 1993-2011 ATRIL Language Engineering, S.L.
All rights reserved.

Use of this software is subject to the terms of the license agreement included with the product. If the license is misplaced, a copy may be requested from ATRIL Language Engineering, S.L.

Information contained in this document is proprietary to ATRIL Language Engineering, S.L. and may be used or disclosed only with written permission from ATRIL Language Engineering, S.L. This manual, or any part thereof, may not be reproduced without the prior written permission of ATRIL Language Engineering, S.L.

This document and the related software described in this manual are supplied under license or nondisclosure agreement and may be used or copied only in accordance with the terms of the agreement. The information in this document is subject to change without notice and does not represent a commitment on the part of ATRIL Language Engineering, S.L.

Sentry Spelling-Checker Engine is a registered trademark of Wintertree Software Inc. FrameMaker, Acrobat, PageMaker, InDesign, and InCopy are registered trademarks of Adobe Systems Inc. Interleaf and QuickSilver are trademarks of BroadVision Inc. QuarkXPress is a trademark of Quark, Inc. Ventura is a trademark of Corel Corporation. Unicode and the Unicode logo are trademarks of Unicode Inc. Microsoft is a registered trademark and Word, PowerPoint, Access, Excel, Visio, Windows XP, Windows Server 2003, Windows Server 2003 R2, Windows Vista, Windows Server 2008, Windows Server 2008 R2 and Windows 7 are trademarks of Microsoft Corporation. SDL Trados, Trados Workbench and Trados TagEditor are trademarks of SDL plc. IBM TranslationManager is a trademark of IBM Corporation. Alchemy CATALYST is a trademark of Alchemy Software Development Ltd. All other product names are trademarks or registered trademarks of their respective companies, and they are used without representation as to their general use. All third-party trademarks are the property of their respective owners.

If you have comments or suggestions about this documentation, please contact ATRIL Language Engineering, S.L. at support@atril.com.

Table of contents

Installing Déjà Vu X2	5
Recommended system requirements	5
Supported Operating Systems	5
Hardware requirements	5
To install Déjà Vu X2	6
Repairing the Installation	11
Activating your license	14
Installing the Dongle	14
Entering an Activation key	14
To use a permanent Activation key	14
To check which version of Déjà Vu X2 you are running	17

déjàvu ✕

ATRIL

Installing Déjà Vu X2

This section describes the minimum requirements for the installation of Déjà Vu X2 and how to install it.

Be sure to install Déjà Vu X2 onto your hard-drive; you cannot run Déjà Vu X2 from your CD-ROM drive. If you experience any problems with installation of the CD-ROM disc, remove the disc from your machine and wipe it off with a soft cloth to ensure that it is free from dust and fingerprints.

Recommended system requirements:

Supported Operating Systems

- Microsoft Windows XP
- Microsoft Vista 32-bit (x86) or 64-bit (x64)
- Windows 7 32-bit (x86) or 64-bit (x64)
- Windows Server 2003, Server 2003 R2, Server 2008 or Server 2008 R2 32-bit (x86) or 64-bit (x64)

Hardware requirements

Minimum hardware requirements

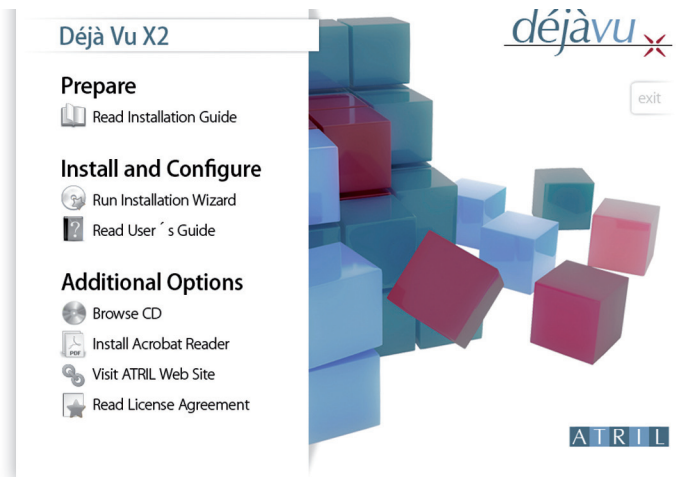
Processor	1GHz or faster 32-bit (x86) or 64-bit (x64) processor
Memory	1GB RAM

Recommended hardware

Processor	1.5GHz or faster dual-core processor
Memory	2GB RAM

To install Déjà Vu X2

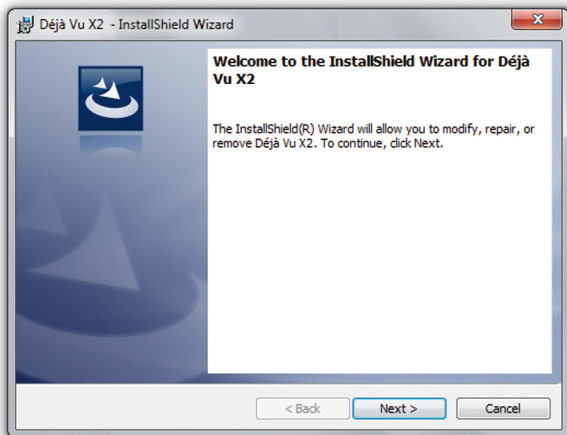
1. Close all applications and turn off virus-detection and screen saver software on your computer. This frees up memory for installation and prevents possible conflicts between the Déjà Vu X2 installer and other programs.
2. Insert the Déjà Vu X2 CD-ROM into your CD-ROM drive.
3. The Déjà Vu X2 AutoRun dialog will appear.



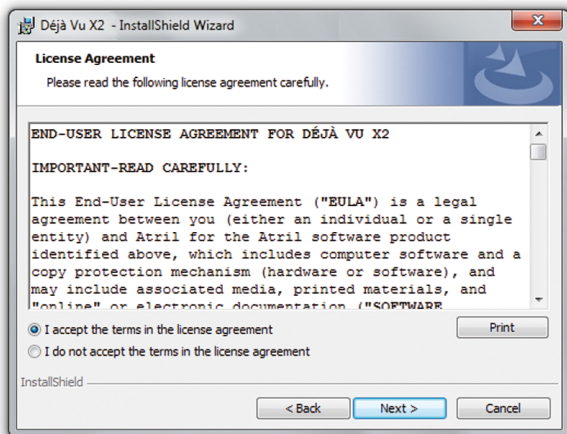
*If it does not appear automatically, double-click on setup.exe in the CD-ROM drive or select
Start > Run > D:\autorun\autorun.hta
(if D is the letter that is assigned to your CD-ROM drive).*

4. Select **Install and Configure > Run installation Wizard**

5. The **Déjà Vu X2 Installation Wizard** appears.

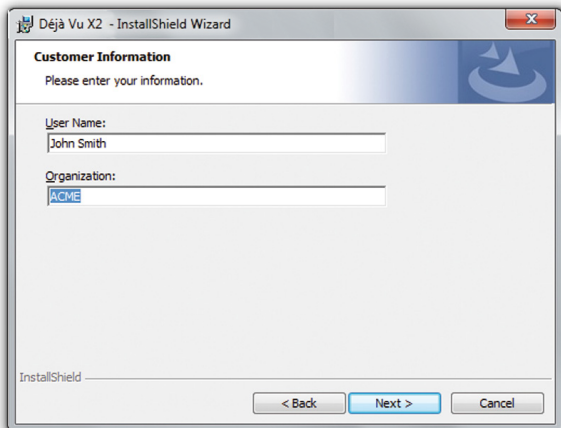


6. Click **Next** to view the license agreement. Read the license agreement carefully.

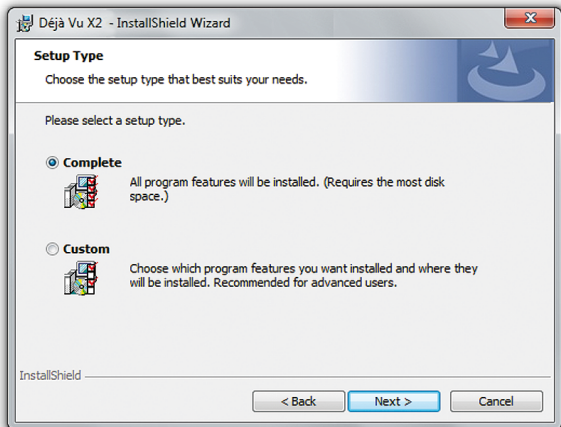


7. If you agree with it, select **I accept the license agreement** and click **Next**. If you do not, select **I do not accept the license agreement** and click **Cancel** to end Setup.
8. Setup prompts you to enter your name and organization.

9. Enter your name and organization, and click **Next**.



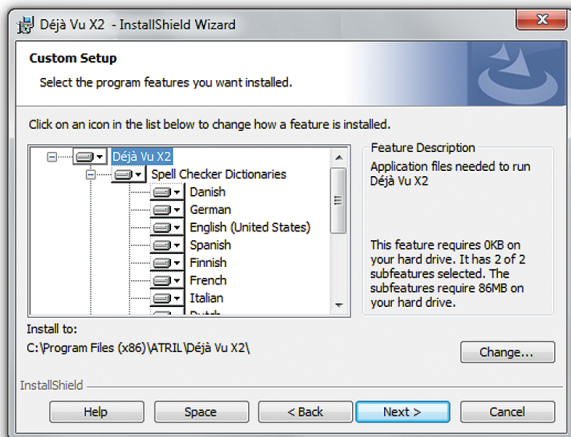
10. Click **Next**. The **Select Installation Type** dialog will be displayed.



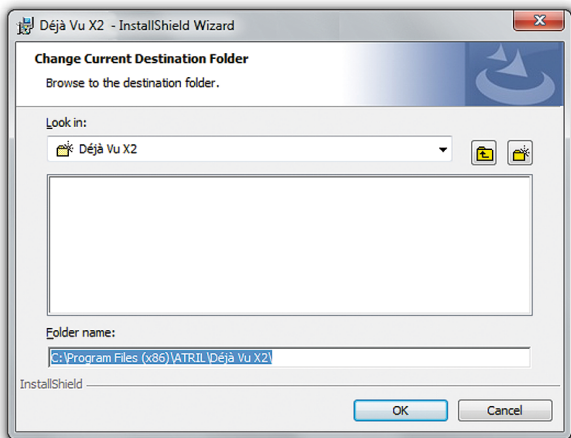
11. You can select:

- **Complete**, to install all of the Déjà Vu X2 components.
 - **Custom**, to select a different installation directory, or to install only those Déjà Vu X2 components you specify.
- Select one of the options and click **Next**.

12. If you chose **Custom** setup, you will be shown a list of Déjà Vu X2 components, including the different spellcheckers and the Terminology Templates. You can click on them to select whether you want them to be installed, installed when required, or not available. Select the components you want to install.

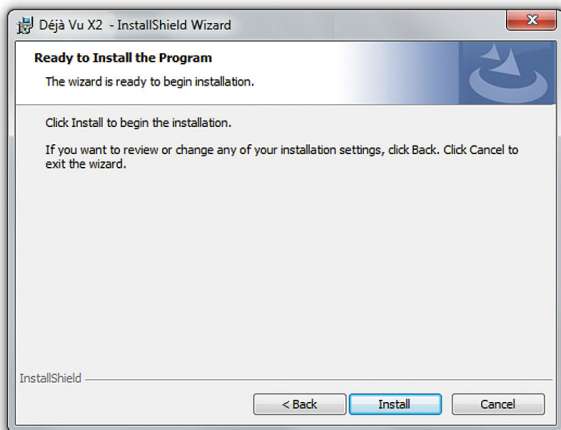


13. If you do not want to use the default destination directory that Setup specifies, you can click **Change** to select a directory.



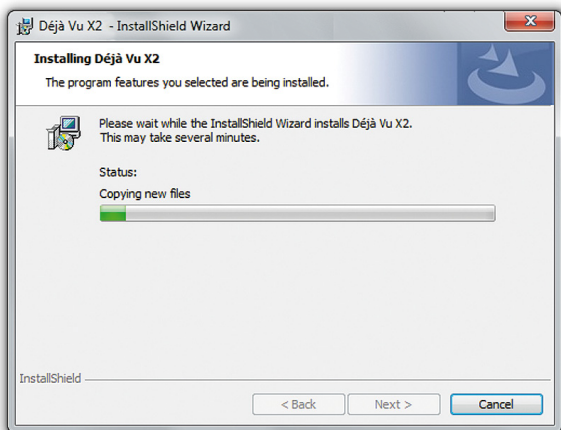
14. When you have selected the components you want to install, click **OK**.

15. Setup is now ready to begin. Click **Install** to start the setup process.

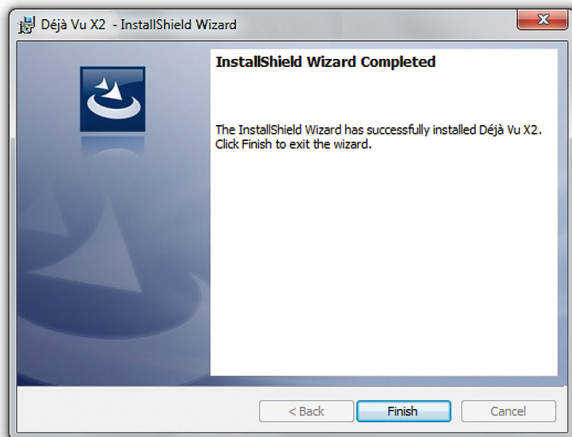


*If any of the information is incorrect, you can click **Back** to edit the information.*

16. Setup will display a dialog indicating the progress of the installation.



17. Once Setup has finished successfully, a final dialog will appear.



18. Click **Finish** to close Setup.

19. When the installation is finished, Setup may ask whether you want to reboot your system (this will happen if there were any files which Setup could not update because they were in use). It is recommended that you do reboot so that all new files will be properly installed. Djéjà Vu X2 is now installed.

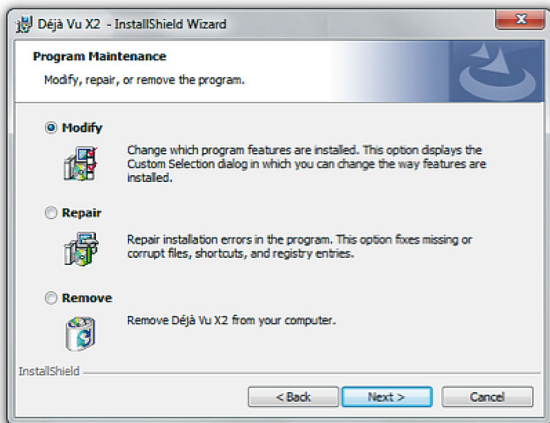
Repairing the Installation

The Djéjà Vu X2 installation program provides a repair feature that you can use to reinstall possibly corrupted program files. This program will not modify or replace any user files, so you do not have to worry that it will change any of the files that you have created (this includes files like spelling dictionaries and your Djéjà Vu X2 settings).

The program will update the program files according to the version you last installed on your computer. This means that you need to have access to the installation files, which are located on the CD or on your hard drive, if you downloaded the installation program from the Internet.

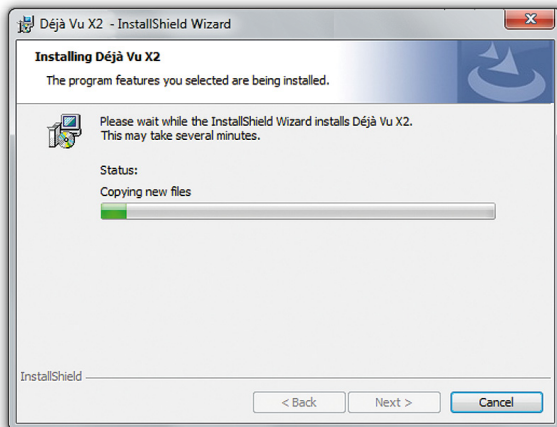
To repair the installation:

1. Close any running session of Déjà Vu X2.
2. A. On Windows XP, select
Start > Control Panel > Add/Remove Programs.
B. On Windows Vista and Windows 7, select
Start > Control Panel > Programs and Features.
3. Highlight Déjà Vu X2 in the list of installed programs.
4. Select **Change**.
5. The **Déjà Vu X2 Setup** dialog appears:



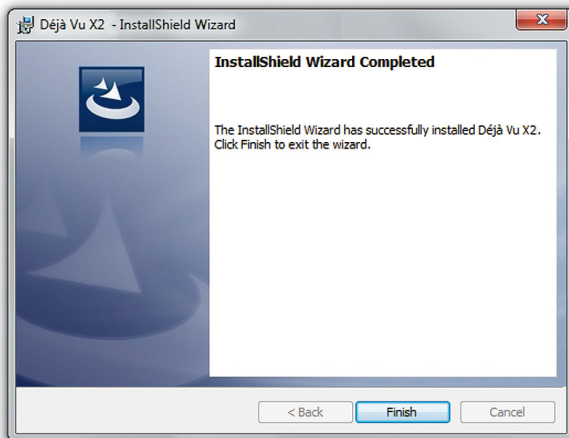
6. You can choose to
 - modify the installation (to add or delete spell-checking dictionaries and/or terminology database templates),
 - delete the installation, or
 - repair the installation.
7. Select **Repair** and click **Next**.
8. You are prompted to either cancel the process or continue.
9. Select **Next**.

10. A progress indicator shows you the progress of the installation.



11. Once the Repair process has finished successfully, a final dialog will appear.

12. Click **Finish** to close the Repair process.



Activating your license

When you purchased Déjà Vu X2, you were given either a USB dongle or an activation key. Please refer to the appropriate section to activate your Déjà Vu X2 license.

Installing the Dongle

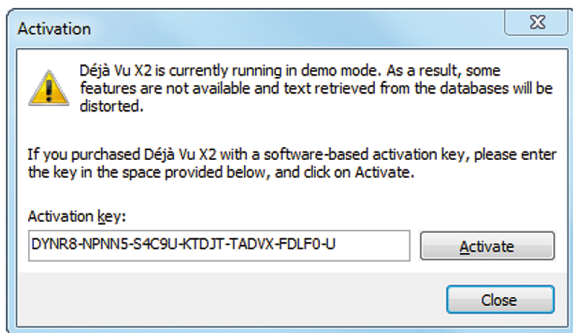
The USB dongle included with Déjà Vu X2 does not require any drivers. To install the dongle, simply plug it into any available USB port on your computer.

If the dongle is connected to your computer but Déjà Vu X2 starts up in demo or evaluation mode, execute the DinkeyLook.exe application in the installation folder (on an English system, the default is C:\Program Files\ATRIL\Deja Vu X2) by double-clicking it. Send what this program reports to support@atril.com, including any extended error messages.

Entering an Activation key

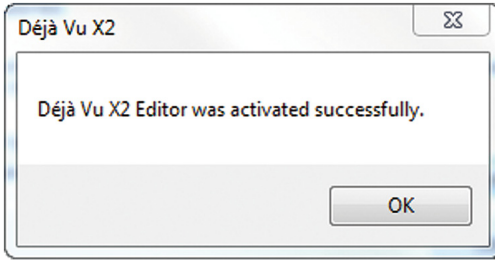
To use a permanent Activation key

1. Open Déjà Vu X2 after you have installed the program.
2. Select **Help > Activate** and enter the **Activation key** you have received from ATRIL.



3. Click **Activate**.

4. If the activation key is correct, following message will appear:

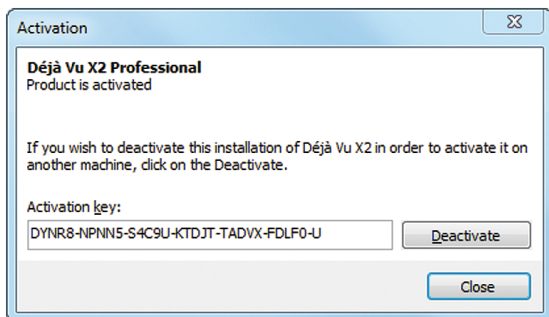


5. Click **OK**. The installation is completed. Your license is permanently activated.

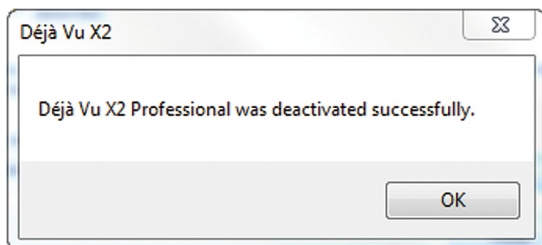
To move your installation to another computer

If you wish to activate your Déjà Vu X2 license on another computer, you will need to first deactivate the license on the computer on which it was previously installed.

1. Open Déjà Vu X2 on the computer where the license is active.
2. Select **Help > Deactivate**. The following dialog will appear:



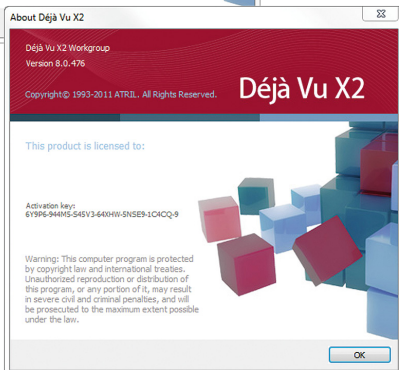
3. Click **Deactivate**. The following message should appear:



4. Click **OK**.
5. You can now reuse your permanent activation key on another computer, following the steps described on pages 14 and 15.

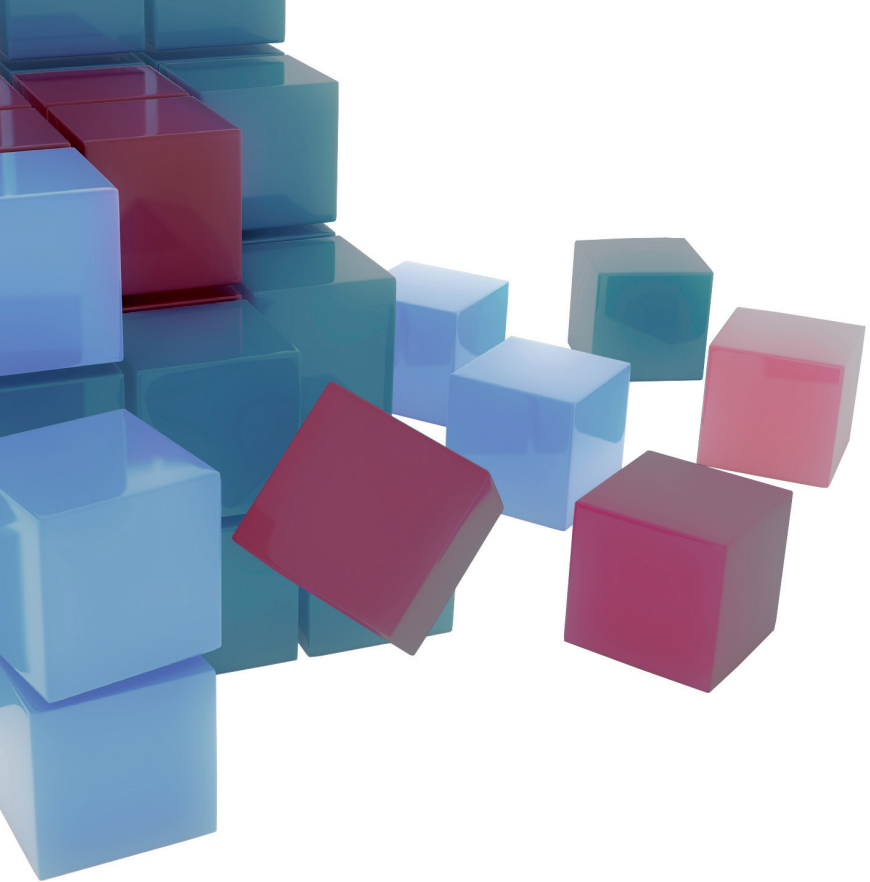
To check which version of Déjà Vu X2 you are running

1. Open Déjà Vu X2.
2. Select **Help > About...**
3. This dialog will display which version, Standard, Professional or Workgroup, is currently enabled:



déjàvu ✕

ATRIL



déjàvu 

ATRIL

Do not lend or make illegal copies of this software. ©2005-2011 ATRIL. All rights reserved.